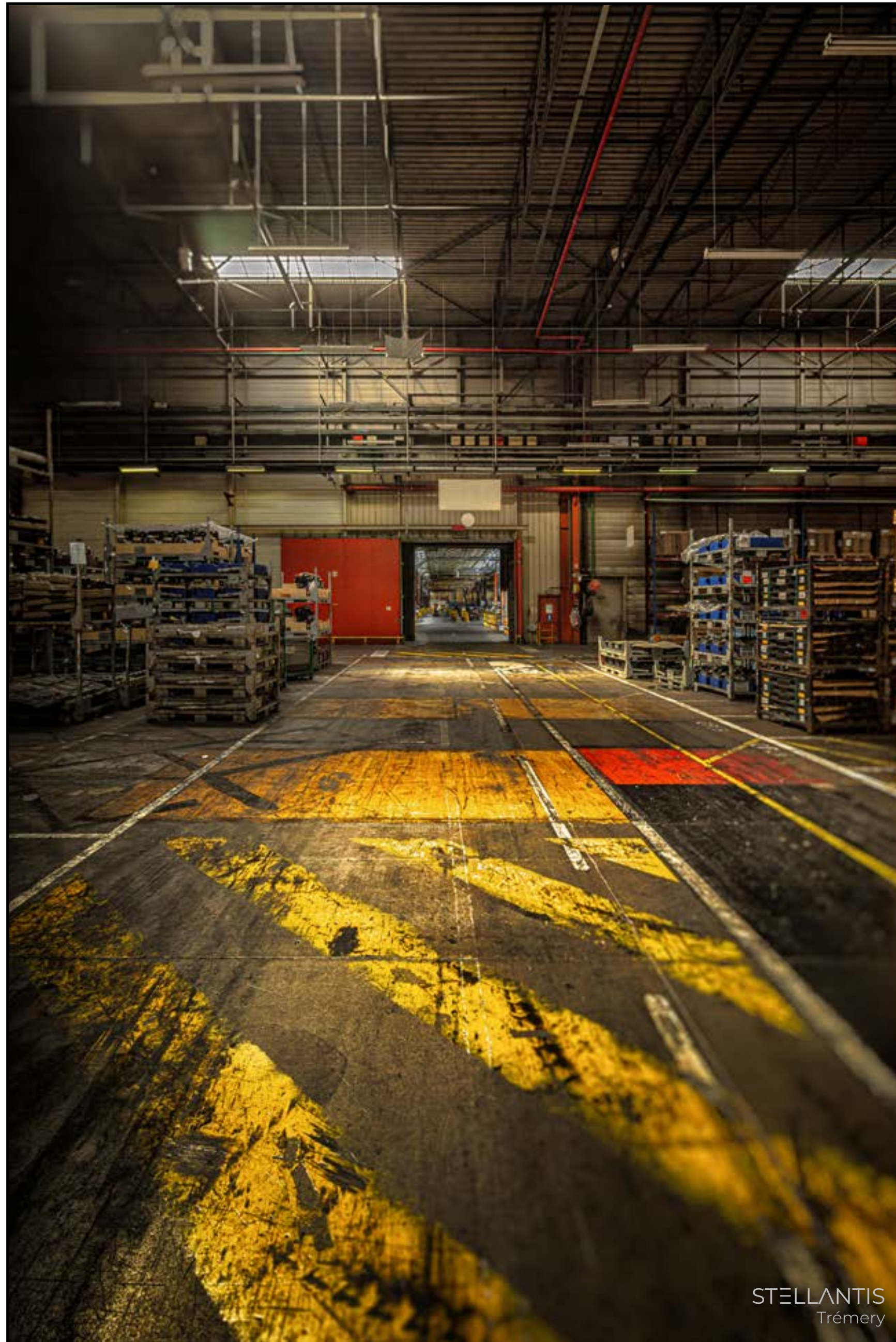


EXPOSITION PHOTOGRAPHIQUE

CATHÉDRALES INDUSTRIELLES

EXHIBITION AT NANCY THERMAL
THE PRESS KIT



La version française de ce dossier de presse est disponible à l'adresse
<https://www.cathedralesindustrielles.art/presse.pdf>

Page 3	- Introduction
Page 4	- Poster
Page 6	- Partners
Page 7	- Exhibition
Page 8	- Website
Page 10	- Virtual Tour
Page 11	- Dates
Page 13	- Prints
Page 15	- The Book
Page 17	- About Me
Page 18	- Contact Info

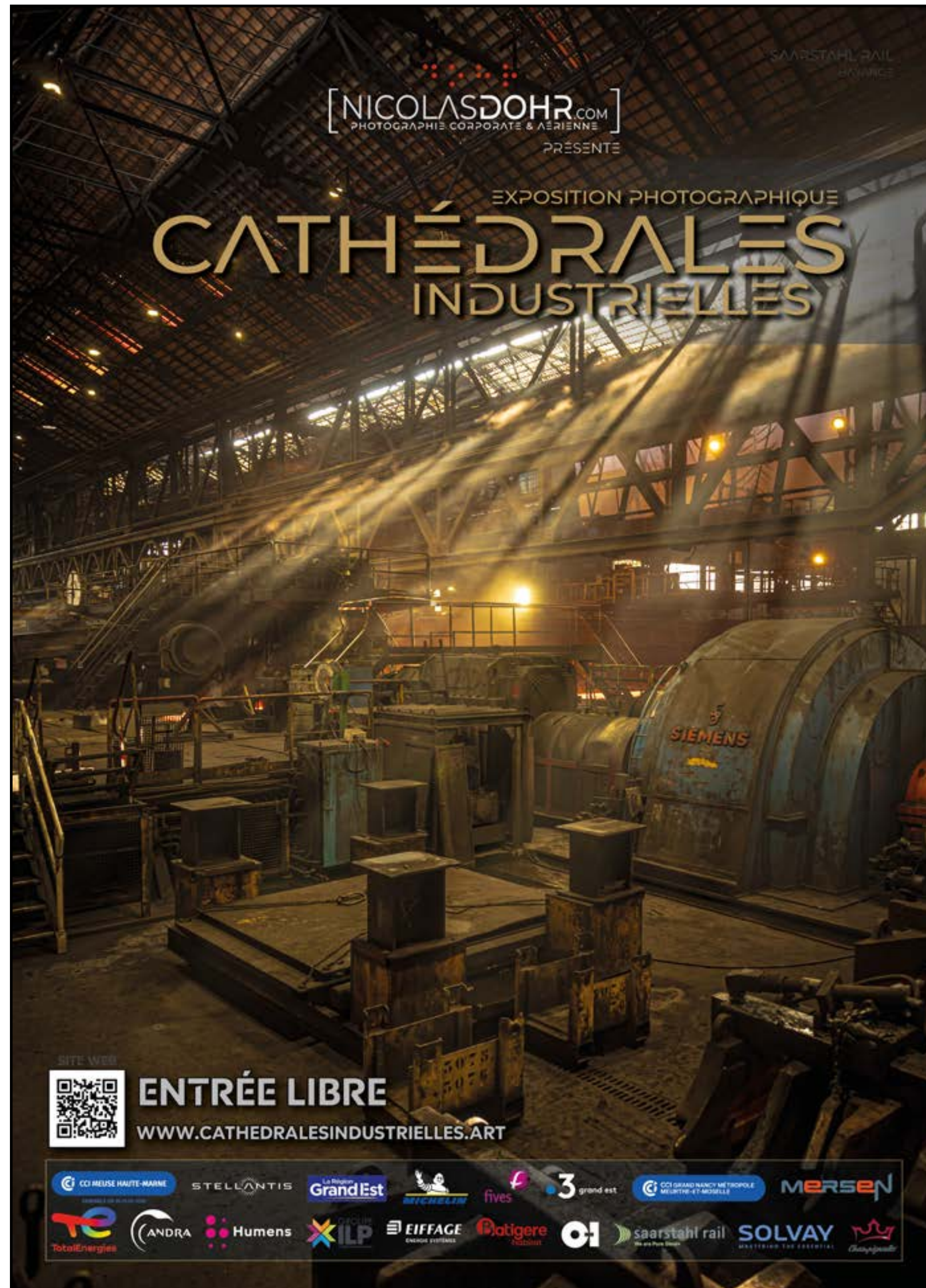
IMPORTANT :

All images featured in the exhibition and the book are the result of photographic captures. None of them were generated using artificial intelligence programs.



A professional photographer for the past 16 years, I specialize in creating visual content for companies. Over time, I've developed a particular sensitivity to the aesthetics of industrial environments.

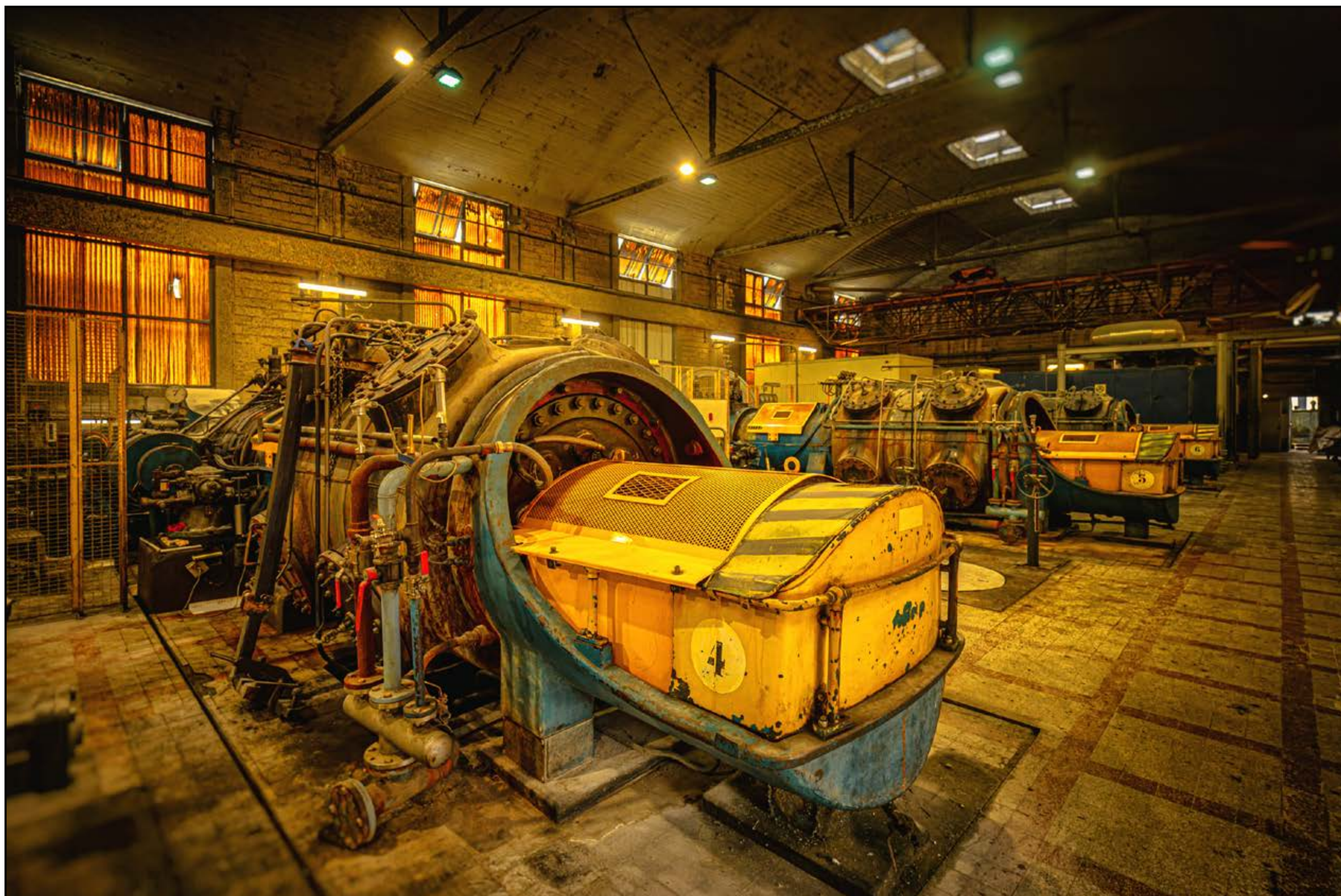
Having worked with major groups such as TotalEnergies, Air Liquide, Saint-Gobain PAM, Stellantis, ANDRA, EDF, and Solvay, I am now presenting a selection of these images in the form of a photography book and a traveling exhibition. The first showing took place at the Grand Nancy Métropole Meurthe-et-Moselle Chamber of Commerce and Industry from December 3, 2024, to January 22, 2025. The exhibition is currently hosted in the remarkable setting of Nancy Thermal.



After experimenting with numerous images to create this visual, this photograph of the Saarstahl Rail factory in Hayange naturally stood out. It reveals a magnificent culmination, like an altar in this industrial cathedral.

You can download it by following [this link](https://www.cathedralesindustrielles.art).

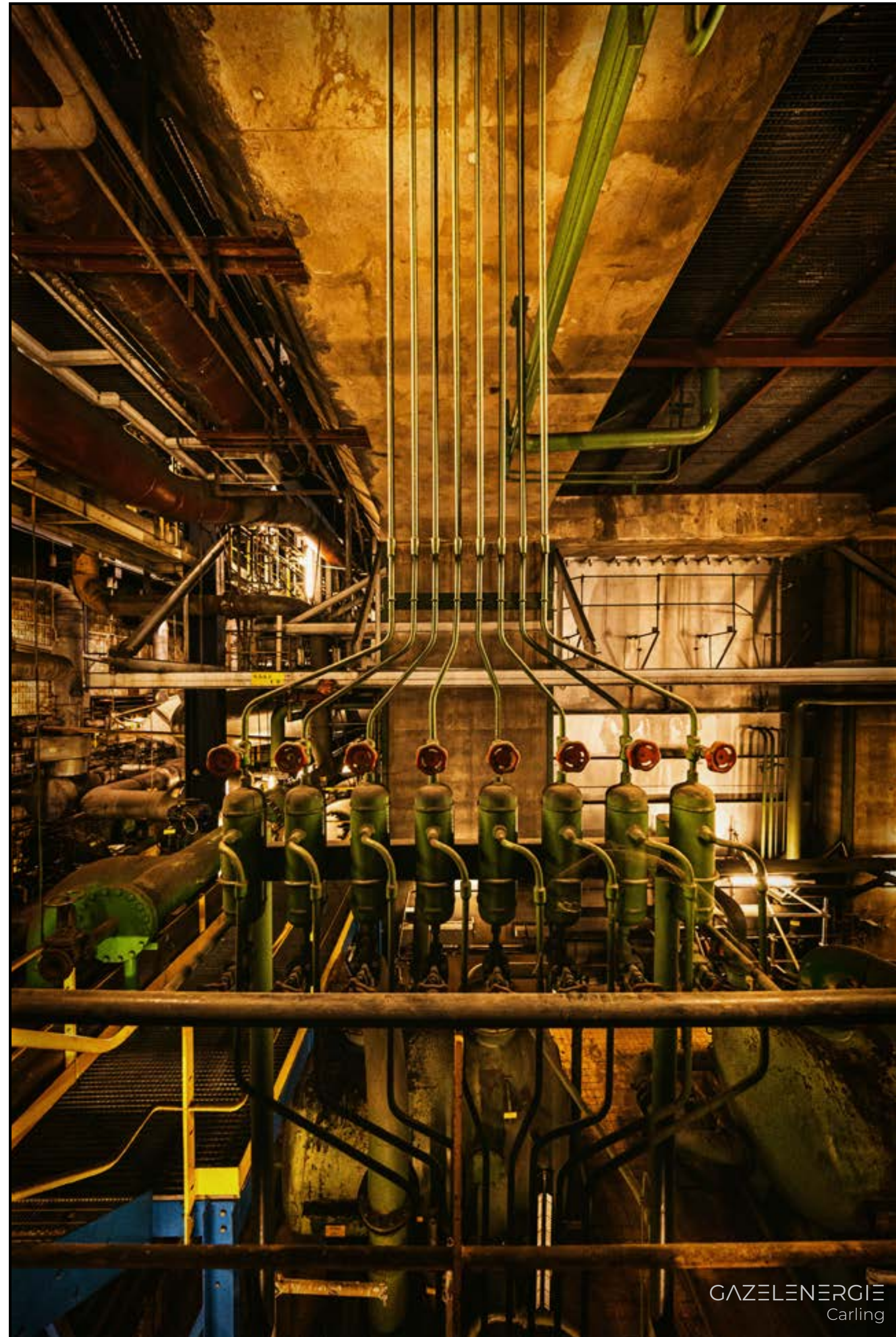
POSTER



HUMENS / NOVACAR3
Laneuveville-devant-Nancy

Partners of the exhibition, these organizations have enabled me to carry this project forward and to see it grow beyond my initial hopes. I extend my heartfelt gratitude to them.





Industry, 19th century. Cyclopean edifices emerge from the earth. The era of spiritual cathedrals yields to that of industrial cathedrals.

Today, industry appears to belong to the vestiges of time: blast furnaces have fallen silent, and the spinning mills have given up the ghost. But is this truly the case? For over fifteen years, I have photographed these cathedrals of iron and fire; they are still very much alive.

The industrial realm remains largely unknown to the public. It is not, in fact, a homogeneous world but rather a collection of singularities, each with its own codes, rules, atmospheres, and strange, fascinating, and intriguing creatures.

In this exhibition, I have chosen to illuminate that fascination while allowing the questions raised by the images to remain unanswered. The viewer encounters each photograph alone, confronted by each machine, each room, each universe. Without explanation, they are free to interpret them through their own lens, beliefs, and experiences. The cold machine transforms into a dreamlike, fantastical creature.

These photographs reveal a world where steel and steam craft mysterious, mesmerizing landscapes. They lead visitors through realms that are often majestic, sometimes unsettling. Each image invites inner exploration, a journey into the workings of human imagination confronted with the raw power of industry. As they journey through this photographic exploration, I hope each visitor glimpses the hidden poetry within these industrial cathedrals—places where dream and reality intertwine in a weave of steel and light.

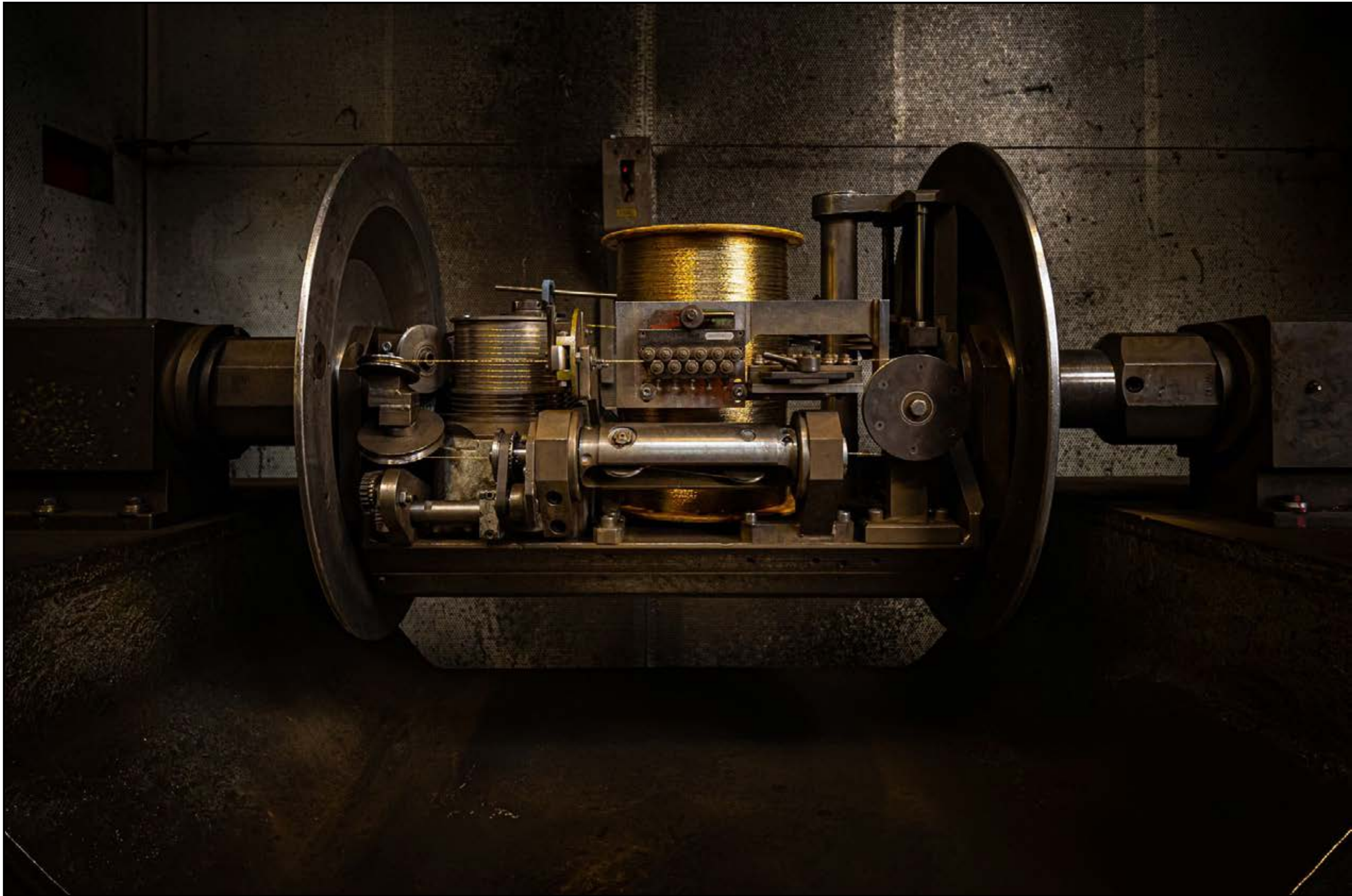
You can find detailed information and the event trailer on the exhibition's website at:



<https://www.cathedralesindustrielles.art/>

A large, dark, industrial-themed poster for the 'CATHÉDRALES INDUSTRIELLES' exhibition. The background is a photograph of a vast industrial interior with high ceilings, steel beams, and machinery. The title 'CATHÉDRALES INDUSTRIELLES' is prominently displayed in large, bold, yellow-gold capital letters. Above the title, 'EXPOSITION PHOTOGRAPHIQUE' is written in smaller white text. Below the title, the location and dates are listed in white: 'EXPOSITION PHOTOGRAPHIQUE À LA CCI GRAND NANCY MÉTROPOLE MEURTHE-ET-MOSELLE', '53, RUE STANISLAS, NANCY', and '3 DÉCEMBRE 2024 - 10 JANVIER 2025'. In the bottom left corner, there is a smaller inset image showing a different industrial scene, with text indicating 'ENTRÉE LIBRE' and the website 'WWW.CATHEDRALESINDUSTRIELLES.ART'. A QR code is also present in the bottom right of this inset. The top of the poster features a navigation menu with links: 'Accueil', 'A Propos', 'Les Partenaires', 'Bande Annonce', 'Contact', 'Qui Suis-Je ?', and 'Les Lieux'. At the very top left, the text 'EXPOSITION PHOTOGRAPHIQUE CATHÉDRALES INDUSTRIELLES' is repeated in a smaller font. The bottom of the poster is filled with a row of logos for various sponsors and partners, including 'CCI', 'Grand Nancy Métropole', 'Meurthe-et-Moselle', 'STELLANTIS', 'MERSEN', 'CI', 'saarstahl rail', 'te', 'ANDRA', 'Humens', 'ILP', 'EITAGE', 'Outgers', and 'SOLVAY'.

WEBSITE



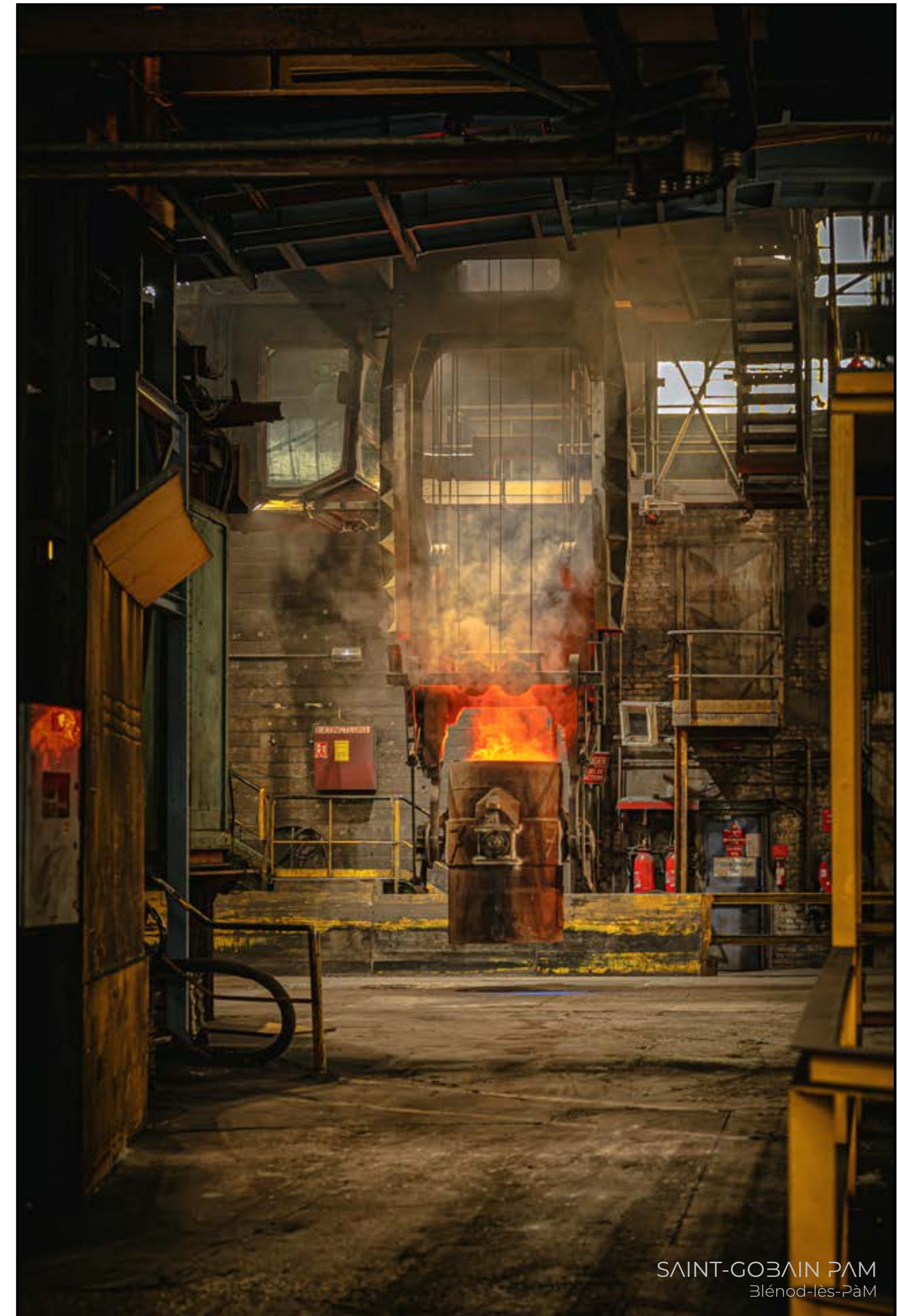
You can visit the exhibition at the CCI Grand Nancy Métropole Meurthe & Moselle from your computer or mobile device directly on the exhibition's website: <https://www.cathedralesindustrielles.art/> under the «Virtual Tour» section.



This exhibition is traveling. At present, six months of displays are already scheduled across four different venues, with further discussions underway for additional locations.

Confirmed dates are as follows:

- December 3, 2024 ↔ January 22, 2025
Salle Gruber
CCI Grand Nancy Métropole Meurthe-et-Moselle
53, rue Stanislas, 54000 Nancy
- January 30, 2025 ↔ February 1, 2025
Regional Finals of the 48th WorldSkills Competition
Metz Exhibition Center
Rue de la Grange aux bois, 57000 Metz
- May 2 ↔ May 31, 2025
Grande Galerie
Nancy Thermal
52, Avenue du Maréchal Juin, 54000 Nancy
- June 2 ↔ July 31, 2025
Palais Abbatial
Abbaye de Senones
Place Dom. Calmet, 88210 Senones
- September 1 ↔ October 31, 2025 (estimated dates)
Bâtiment d'accueil du public
Laboratoire de l'ANDRA - CMHM
RD 960, 55290 Bure



SELV
DATES



NORSKE SKOG
Golbey

The photographic exhibition consists of 45 frames:

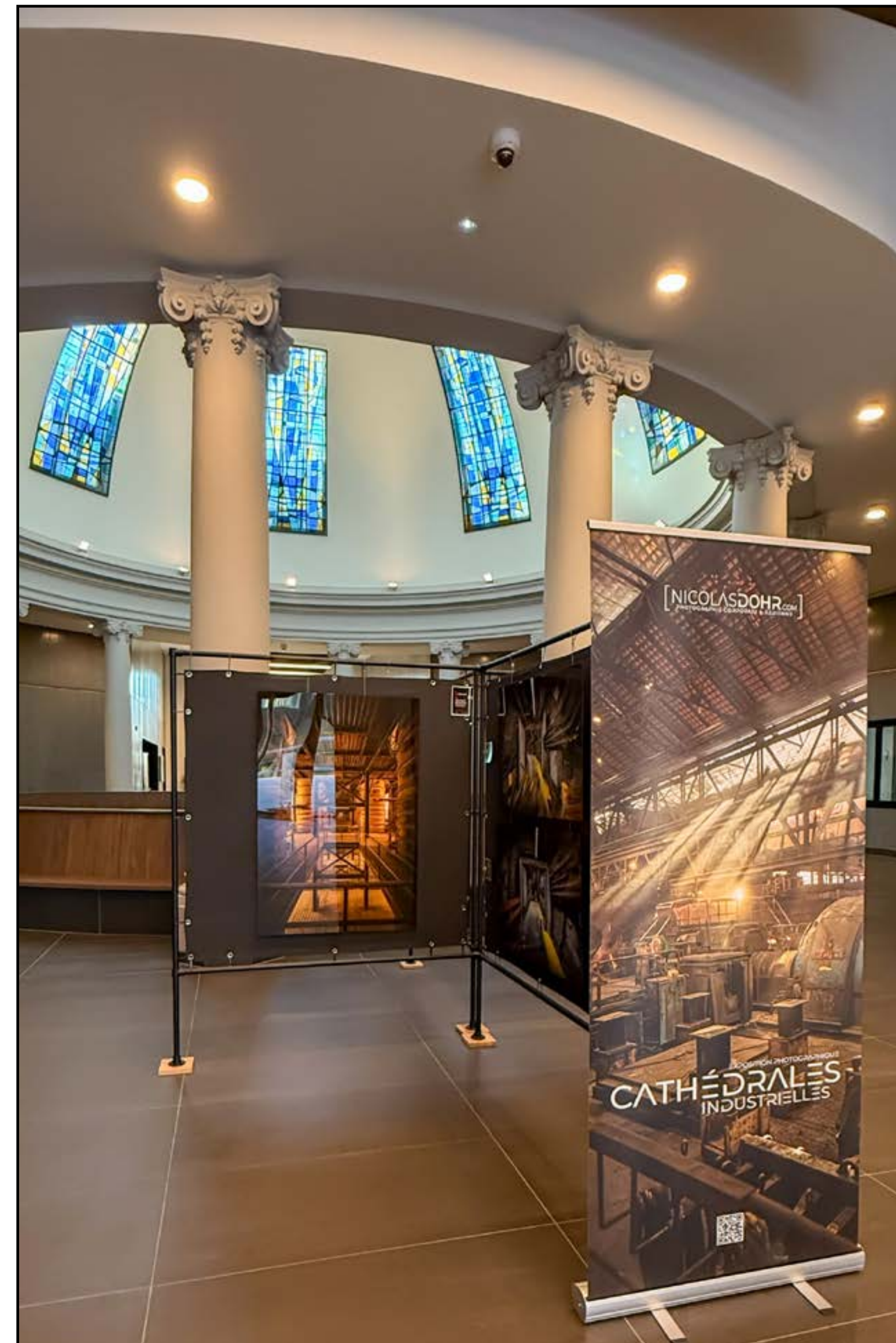
- 21 measuring 120 x 80 cm
- 12 measuring 90 x 60 cm
- 12 measuring 60 x 40 cm

The photos are printed on plexiglass. This direct printing process ensures vivid colors, subtle gradients, and optimal sharpness.

This glossy medium is distinguished by its deep tones, making the images particularly immersive for the viewer.



EXHIBITION AT THE GRAND NANCY MÉTROPOLE MEURTHE & MOSELLE CHAMBER OF COMMERCE AND INDUSTRY
Nancy



EXHIBITION AT NANCY THERMAL
Nancy



EXHIBITION AT NANCY THERMAL
Nancy





SOLVAY
Dombasle-sur-Meurthe



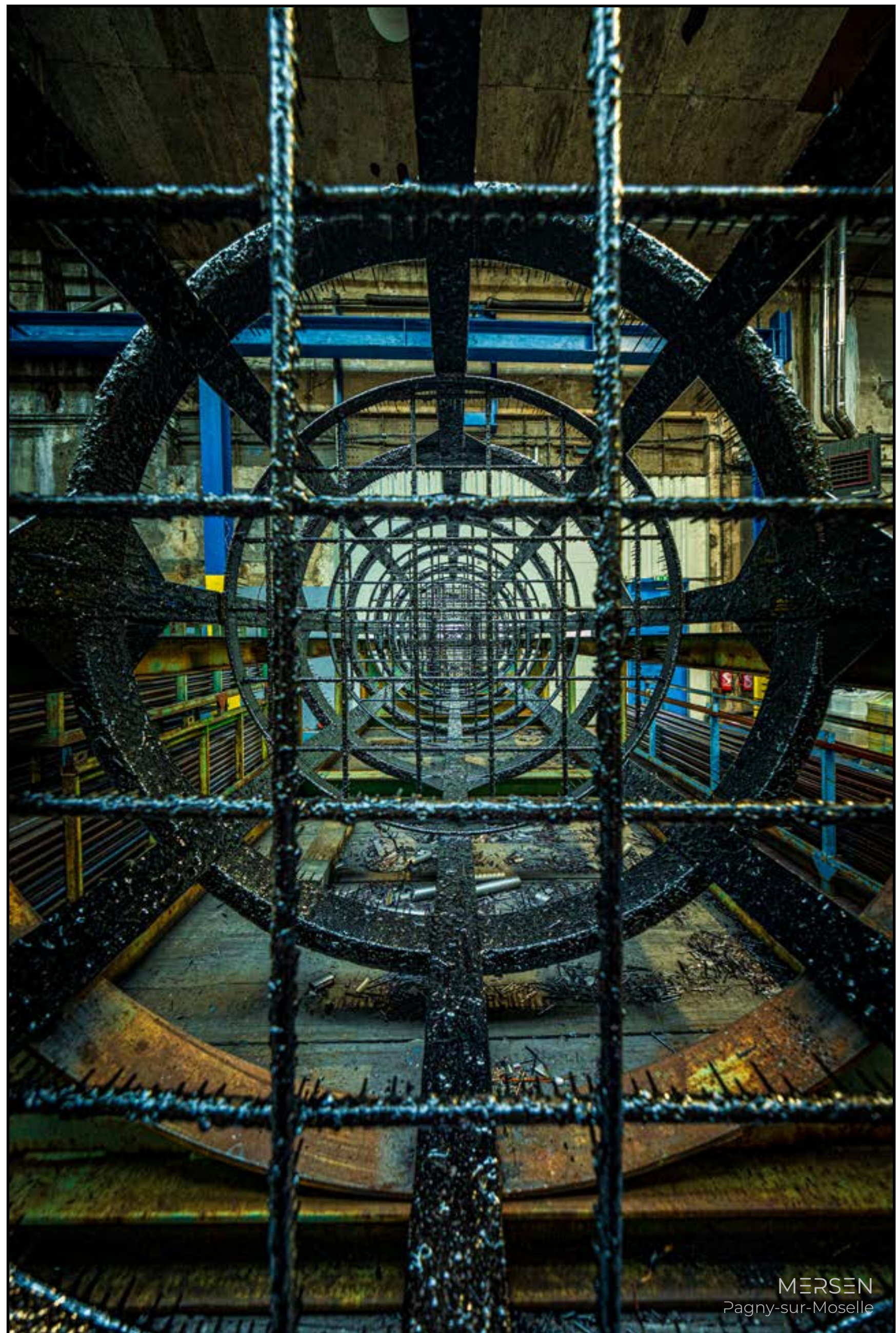
I grew up in a family of artists, surrounded by a grandfather, father, and uncle who were painters, and a mother who was a sculptor. For my part, I found my path in photography, a passion I have pursued since the age of seven.

When it came time to choose my professional path, I initially pursued a scientific education. After ten years in the IT field, I returned to my first love and established myself as an independent photographer in 2008.

My interest in science and technology naturally led me to work with companies and in the industrial sector. I began with Saint-Gobain and COLAS, and later many others, including Sanofi. I work for my clients throughout France and regularly undertake assignments abroad in countries such as Portugal, Saudi Arabia, Croatia, Morocco, and China.

I also draw upon the skills I have developed over my career to illustrate technical and architectural subjects, adapting to the varied needs of my clients. This experience has allowed me to build great versatility and adaptability, enabling me to work across a wide range of topics.

This versatility allows me to collaborate with some of France's largest corporations (TotalEnergies, L'Oréal, Air Liquide, EDF, Orange, MAIF, Bouygues, Vinci) and major agencies (Publicis, Havas). I also work regularly with the University of Lorraine and Destination Nancy, the primary tourism operator for the Greater Nancy metropolitan area.



Email

contact@nicolasdohr.com

Phone

+33.6.76.35.90.39

Website

<https://www.nicolasdohr.com/>

Social Networks :

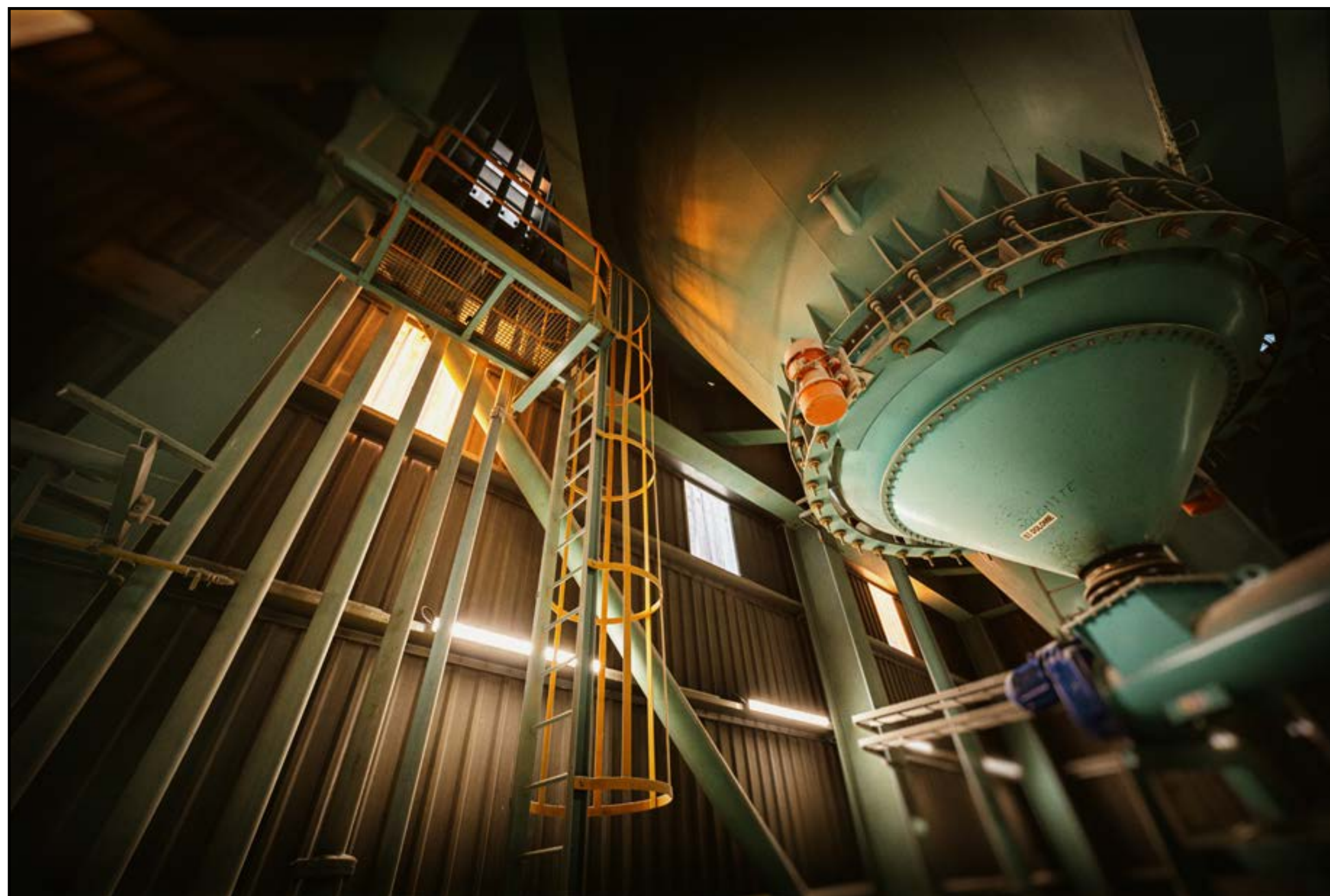
Linkedin : <https://www.linkedin.com/in/nicolasdohr/>

Facebook : <https://www.facebook.com/nicolasdohrphoto/>

Instagram : <https://www.instagram.com/nicolasdohr/>

Youtube : <https://www.youtube.com/@nicolasdohr/>





AGC GLASS
Seingbouse